

NUS Graduate School



Why Singapore? >>>

Why Singapore?



Why National University of Singapore (NUS)?

A leading global university centred in Asia, dedicated to quality education, influential research and visionary enterprise

8th
globally on QS** World
University Rankings 2024

1st
in Asia on QS** World
University Rankings 2024

19th
globally on THE* World
University Rankings 2023

3rd
in THE* Asia University
Rankings 2023

* THE - Times Higher Education

** QS - QS Quacquarelli Symonds Limited

Graduate Education in NUS

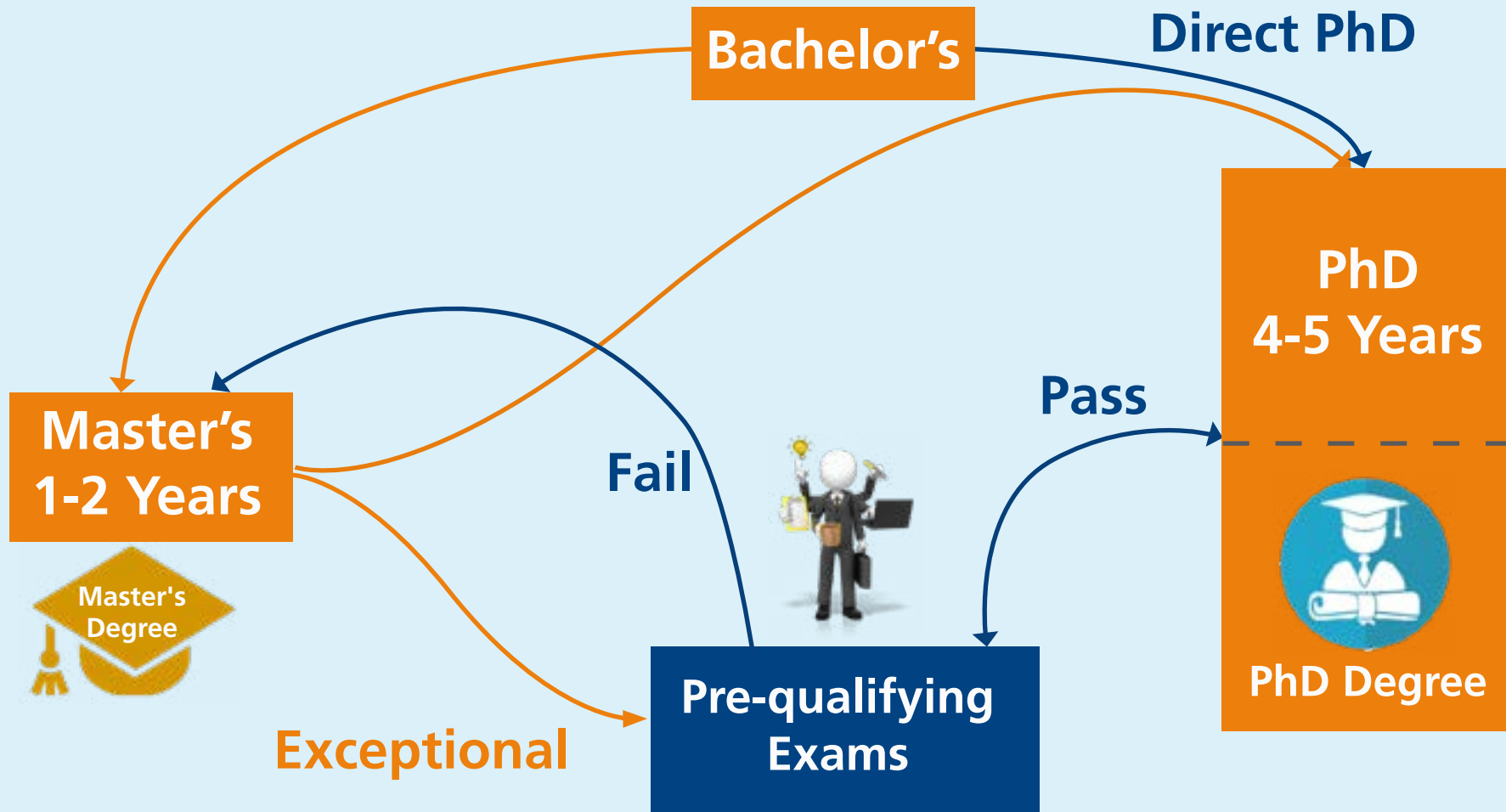
(PhD, Doctoral Programmes, Master's and Graduate Diploma)

- **Comprehensive, Research-Intensive** University
- **>16,000 graduate students**
[~5,000 research and ~11,000 coursework students]
- **16 faculties**
- **~174 programmes**
[> 60 Doctoral and PhD programmes]
- **~40 Research Institutes, Centres of Excellence**
and Corporate Laboratories





Pathways to Master's / PhD



Computing

NUS School of Computing (SoC), one of the leading computing schools in the world with faculty members who are both internationally recognised researchers and inspiring teachers, offers exceptional education experience through its outstanding degree programmes across the full spectrum of computing fields, including Computer Science, Information Systems, Computer Engineering, Business Analytics and Information Security, as well as specialisations in emerging areas of importance such as artificial intelligence, fintech, blockchain, analytics and security. Correspondingly, SoC attracts excellent students and produce talented graduates who are making their mark in the world.

The exceptional education that students experience here, coupled with the demand for computing talents in all fields and industries, make NUS Computing graduates highly sought-after. It is proud to count many locally and internationally prominent leaders in the world among its large and accomplished family of alumni.



PhD Programmes

Doctor of Philosophy (Computer Science)



Apply Before:

5 January (August intake) / 15 June (January intake)
Contact: phd-info@comp.nus.edu.sg

Doctor of Philosophy (Information Systems and Analytics)



Apply Before:

5 January (August intake) / 15 June (January intake)
Contact: phd-info@comp.nus.edu.sg

Master of Science (Computing) + Doctor of Philosophy



Apply Before:

5 January (August intake) / 15 June (January intake)
Contact: phd-info@comp.nus.edu.sg

Graduate Coursework Programmes

- Master of Computing (General Track)
- Master of Computing (Specialisation: Computer Science, Information Systems, Inforcomm Security, Artificial Intelligence)
- Master of Science (Business Analytics)
- Master of Science (Digital Financial Technology)

PhD Programmes

Intakes: August / January

Required Tests: GRE - for PhD programmes

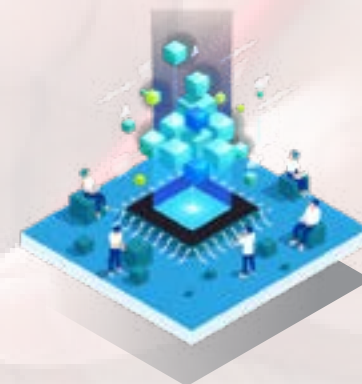
TOEFL/IELTS - for applicants whose language of undergraduate instruction is not English

Design and Engineering

The College of Design & Engineering (CDE), housing world-class researchers, is renowned globally for its excellence in diverse research fields. CDE students produce high-impact research, several with patents and publications.

Graduate studies offers students opportunities to pursue research, obtain additional education and skills, and elevate salary level upon degree completion. Graduates are well-prepared for careers in industry and academia.

Graduate research programmes offer specialised training in a particular subject area through independent investigation, study, and experimental work, culminating in a thesis on the research undertaken. CDE offers excellent opportunities to be immersed in a vibrant research-intensive environment across all departments in the various fields listed below.



PhD Programmes

PhD (Architecture) Contact: cdepgresearch@nus.edu.sg	PhD (Electrical & Computer Engineering) Contact: cdepgresearch@nus.edu.sg	Doctor of Engineering (Biomedical Engineering) Contact: cdepgresearch@nus.edu.sg	Doctor of Engineering (Industrial Systems Engineering & Management) Contact: cdepgresearch@nus.edu.sg
PhD (Built Environment) Contact: cdepgresearch@nus.edu.sg	PhD (Industrial Design) Contact: cdepgresearch@nus.edu.sg	Doctor of Engineering (Built Environment) Contact: cdepgresearch@nus.edu.sg	Doctor of Engineering (Materials Science Engineering) Contact: cdepgresearch@nus.edu.sg
PhD (Biomedical Engineering) Contact: cdepgresearch@nus.edu.sg	PhD (Industrial Systems Engineering & Management) Contact: cdepgresearch@nus.edu.sg	Doctor of Engineering (Chemical & Biomolecular Engineering) Contact: cdepgresearch@nus.edu.sg	Doctor of Engineering (Mechanical Engineering) Contact: cdepgresearch@nus.edu.sg
PhD (Chemical and Biomolecular Engineering) Contact: cdepgresearch@nus.edu.sg	PhD (Materials Science Engineering) Contact: cdepgresearch@nus.edu.sg	Doctor of Engineering (Civil & Environmental Engineering) Contact: cdepgresearch@nus.edu.sg	NUS-Singapore University of Technology and Design Joint PhD in Architecture Contact: cdepgresearch@nus.edu.sg
PhD (Civil & Environmental Engineering) Contact: cdepgresearch@nus.edu.sg	PhD (Mechanical Engineering) Contact: cdepgresearch@nus.edu.sg	Doctor of Engineering (Electrical & Computer Engineering) Contact: cdepgresearch@nus.edu.sg	NUS-Singapore University of Technology and Design Joint PhD in Biomedical Engineering Contact: cdepgresearch@nus.edu.sg

PhD Programmes

Intakes: August / January

Apply before: August (1 January for overseas application, 1 April for local application) /
January (1 July for overseas application, 1 September for local application)

Required Tests: GRE - for PhD programmes

TOEFL/IELTS - for applicants whose language of undergraduate instruction is not English

Design and Engineering



PhD Programmes

NUS-Singapore University of Technology and Design Joint
PhD in Chemical & Biomolecular Engineering
Contact: cdepgresearch@nus.edu.sg

NUS- Indian Institutes of Technology Kanpur Joint
PhD in Biomedical Engineering
Contact: cdepgresearch@nus.edu.sg

NUS- Indian Institutes of Technology Kanpur Joint
PhD in Mechanical Engineering
Contact: cdepgresearch@nus.edu.sg

NUS-Singapore University of Technology and Design Joint
PhD in Civil & Environmental Engineering
Contact: cdepgresearch@nus.edu.sg

NUS- Indian Institutes of Technology Kanpur Joint
PhD in Chemical & Biomolecular Engineering
Contact: cdepgresearch@nus.edu.sg

NUS-Singapore University of Technology and Design Joint
PhD in Electrical & Computer Engineering
Contact: cdepgresearch@nus.edu.sg

NUS- Indian Institutes of Technology Kanpur Joint
PhD in Civil & Environmental Engineering
Contact: cdepgresearch@nus.edu.sg

NUS-Singapore University of Technology and Design Joint
PhD in Industrial Systems Engineering & Management
Contact: cdepgresearch@nus.edu.sg

NUS- Indian Institutes of Technology Kanpur Joint
PhD in Electrical & Computer Engineering
Contact: cdepgresearch@nus.edu.sg

NUS-Singapore University of Technology and Design Joint
PhD in Materials Science Engineering
Contact: cdepgresearch@nus.edu.sg

NUS- Indian Institutes of Technology Kanpur Joint
PhD in Industrial Systems Engineering & Management
Contact: cdepgresearch@nus.edu.sg

NUS-Singapore University of Technology and Design Joint
PhD in Mechanical Engineering
Contact: cdepgresearch@nus.edu.sg

NUS- Indian Institutes of Technology Kanpur Joint
PhD in Materials Science Engineering
Contact: cdepgresearch@nus.edu.sg

PhD Programmes

Intakes: August / January

Apply before: August (1 January for overseas application, 1 April for local application) /
January (1 July for overseas application, 1 September for local application)

Required Tests: GRE - for PhD programmes

TOEFL/IELTS - for applicants whose language of undergraduate instruction is not English

Design and Engineering

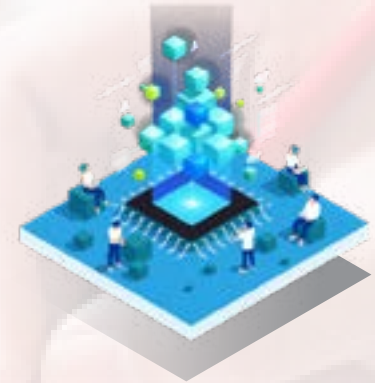
Masters by Research

- Master of Arts (Architecture)
- Master of Arts (Industrial Design)
- Master of Engineering (Biomedical Engineering)
- Master of Engineering (Chemical and Biomolecular Engineering)
- Master of Engineering (Civil and Environmental Engineering)
- Master of Engineering (Electrical and Computer Engineering)
- Master of Engineering (Industrial Systems Engineering and Management)
- Master of Engineering (Materials Science and Engineering)
- Master of Engineering (Mechanical Engineering)
- Master of Science (Built Environment)

Graduate Coursework Programmes

- Master of Architecture
- Master of Arts (Architectural Conservation)
- Master of Arts (Urban Design)
- Master of Design (Integrated Design)
- Master of Landscape Architecture
- Master of Science (Biomedical Engineering)
- Master of Science (Building Performance and Sustainability)
- Master of Science (Chemical Engineering)

- Master of Science (Civil Engineering)
- Master of Science (Computer Engineering)
- Master of Science (Electrical Engineering)
- Master of Science (Energy Systems)
- Master of Science (Environmental Engineering)
- Master of Science (Industrial and Systems Engineering)
- Master of Science (Integrated Sustainable Design)
- Master of Science (Management of Technology and Innovation)
- Master of Science (Maritime Technology and Management)
- Master of Science (Materials Science and Engineering)
- Master of Science (Mechanical Engineering)
- Master of Science (Mechanical Engineering) - NUSRI (Suzhou)
- Master of Science (Project Management)
- Master of Science (Robotics)
- Master of Science (Safety, Health and Environmental Technology)
- Master of Science (Semiconductor Technology and Operations)
- Master of Science (Supply Chain Management)
- Master of Urban Planning
- Graduate Diploma in Architectural Conservation



PhD Programmes

Intakes: August / January

Apply before: August (1 January for overseas application, 1 April for local application) /
January (1 July for overseas application, 1 September for local application)

Required Tests: GRE - for PhD programmes

TOEFL/IELTS - for applicants whose language of undergraduate instruction is not English

Dentistry

Faculty of Dentistry is the only dental school in Singapore with a rich history of over 90 years. It is committed to training the next generation of clinicians and researchers through its range of academic programmes including Graduate residency training and Research programmes.

FoD's research programmes leading to Master of Science (MSc) and Doctor of Philosophy (PhD) degrees are awarded in the areas of Biomaterials and Tissue Engineering, Microbiology and Immunology, Populational and Clinical Research. [Dedicated thesis advisors](#) are committed to providing timely and personalised guidance and support to its research students throughout their research journey.

FoD's three-year full time graduate residency training programmes are offered in Endodontics, Oral & Maxillofacial Surgery, Orthodontics, Paediatric Dentistry, Periodontology and Prosthodontics. These full-time three-year programmes, which culminate in the Master of Dental Surgery (MDS), consist of clinical, didactic and research components. FoD provides residency training that prepares its graduates for specialty registration with local and international professional bodies. Many of its graduates go on to become thought leaders in continuing education and dental research.

FoD also offers two-year part time graduate diploma programmes in Dental Implantology and Geriatric Dentistry.



PhD Programmes

Doctor of Philosophy (PhD)

Apply Before: 15 Nov / 15 May
Contact: denmz@nus.edu.sg

Masters by Research

- Master of Science

Graduate Coursework Programmes

- Master of Dental Surgery (Endodontics)
- Master of Dental Surgery (Oral and Maxillofacial Surgery)
- Master of Dental Surgery (Orthodontics)
- Master of Dental Surgery (Prosthodontics)
- Master of Dental Surgery (Periodontics)
- Master of Dental Surgery (Paediatric Dentistry)

*For Master of Dental Surgery programmes, please visit [here](#) for information.

- Graduate Diploma (Dental Implantology)
- Graduate Diploma (Geriatric Dentistry)

*For Graduate Diploma, please visit [here](#) for information.

PhD Programmes

Intakes: August / January

Required Tests: GRE - for PhD programmes

TOEFL/IELTS - for applicants whose language of undergraduate instruction is not English



Duke-NUS Medical School, established in 2005, is a landmark collaboration between Duke University in the USA and the National University of Singapore (NUS). It is Singapore's only US-style graduate-entry medical school. Through its Academic Medicine partnership with SingHealth, Singapore's largest public healthcare cluster, Duke-NUS established the SingHealth Duke-NUS Academic Medical Centre, driving excellence in clinical care, research and education to transform medicine and improve lives.

The Duke-NUS Doctor of Medicine (MD) programme embraces a pioneering "Clinicians First, Clinicians Plus" educational philosophy, guiding graduates to first become competent and patient-centered clinicians before advancing their other capabilities to become clinician-scientists, innovators, educators and leaders.

The School's three PhD programmes embed students in its five Signature Research Programmes, learning from scientists who are tackling the most pressing healthcare challenges in Singapore and Southeast Asia through basic and translational research. The Duke-NUS Master of International Translational Medicine (MITM) programme, launched in 2022, offers students a unique opportunity to learn from those directly involved in translational medicine; engaging with world leading experts through our partnership with the Eureka Institute for Translational Medicine.



PhD Programmes

PhD in Integrated Biology and Medicine

Apply Before: 15 January
Contact: admissions@duke-nus.edu.sg



PhD in Quantitative Biology and Medicine

Apply Before: 15 January
Contact: admissions@duke-nus.edu.sg



PhD in Clinical and Translational Sciences

Apply Before: 15 January
Contact: admissions@duke-nus.edu.sg



MD-PHD

Apply Before:
1 September (early application) /
31 January (final deadline)
Contact: admissions@duke-nus.edu.sg



Graduate Coursework Programmes

- Doctor of Medicine
- Master of International Translational Medicine (MITM)

PhD Programmes

Intakes: August / January

Required Tests: GRE - for PhD programmes

TOEFL/IELTS - for applicants whose language of undergraduate instruction is not English

Medicine

Established in 1905 to educate and train medical professionals for Singapore, the NUS Yong Loo Lin School of Medicine is a leading research institution in Asia. Research at NUS Medicine takes place at the frontiers of medicine, transforming scientific insights into translational outcomes and tangible health benefits.

Our graduate programmes by research are designed to cultivate skilled biomedical scientists and clinician-scientists, who will spearhead and advance the field of medical biotechnology efforts in the industry. Students are engaged in supervised research with established faculty members for their period of candidature, at the end of which, they submit a thesis that is examined by a panel of examiners. Upon successful completion, students are awarded an MSc or PhD degree.

NUS Medicine also offers a suite of Masters by Coursework programmes. These programmes are designed for both working professionals and fresh graduates, who are looking at advancing their knowledge and careers in their chosen fields of specialisation.



PhD Programmes

Doctor of Philosophy (Medicine)

Apply Before: 31 Dec / 30 June
Contact: dgrs@nus.edu.sg



NUS-King's College London (KCL) Joint PhD

Apply Before: 31 Dec / 30 June
Contact: dgrs@nus.edu.sg



Doctor of Philosophy (Nursing)

Apply Before: 15 Nov / 15 May
Contact: nurbox3@nus.edu.sg



Masters by Research

- Master of Science (Medicine)
- Master of Science (Behavioural and Implementation Sciences in Health)
- Master of Science (Nursing)

Graduate Coursework Programmes

- Master of Science (Applied Biomedicine)
- Master of Science (Audiology)
- Master of Science (Biomedical Informatics)
- Master of Clinical Mental Health and Psychotherapy
- Master of Science (Precision Health and Medicine)
- Master of Science (Speech and Language Pathology)
- Master of Nursing

For Clinicians

- Master of Clinical Investigation (MCI)
- Master of Medicine (Anaesthesiology)
- Master of Medicine (Diagnostic Radiology)
- Master of Medicine (Emergency Medicine)
- Master of Medicine (Family Medicine)
- Master of Medicine (Internal Medicine)
- Master of Medicine (Obstetrics and Gynaecology)
- Master of Medicine (Ophthalmology)
- Master of Medicine (Orthopaedic Surgery)
- Master of Medicine (Otorhinolaryngology)
- Master of Medicine (Paediatric Medicine)
- Master of Medicine (Surgery)
- Graduate Diploma (Child and Adolescent Health)
- Graduate Diploma (Palliative Medicine)
- Graduate Diploma (Family Medicine)
- Graduate Diploma (Family Practice Dermatology)
- Graduate Diploma (Geriatric Medicine)
- Graduate Diploma (Mental Health)

PhD Programmes

Intakes: August / January

Required Tests: GRE - for PhD and Master by Research programmes

TOEFL/IELTS - for applicants whose language of undergraduate instruction is not English

Public Health

Saw Swee Hock School of Public Health (SSHSPH)'s graduate programmes prepare passionate individuals to create positive change in public health. These programmes develop future leaders, researchers, and practitioners dedicated to tackling health disparities, promoting equity, and improving population health and well-being, locally and globally.

The curriculum covers various disciplines such as epidemiology, biostatistics, environmental health, policy and management, social & behavioural sciences, and health promotion. It combines theory with practical applications, teaching research methodology, health data analysis, intervention design, implementation, and programme evaluation. Students gain a deep understanding of social determinants of health, including economic, environmental, and social factors impacting health outcomes. Experiential learning is vital, with fieldwork, internships, or practicum experiences allowing students to apply knowledge and skills in real-world settings. This approach fosters collaboration with communities, organizations, and public health agencies, providing valuable insights into field challenges and opportunities.

Graduates have career opportunities in governmental health agencies, non-profits, research and academic institutions, hospitals, consulting firms, and international organizations. SSHSPH's graduate programmes empower individuals to become influential change agents, dedicated to advancing the field of public health.



PhD Programmes

Doctor of Philosophy (Public Health)

Apply Before: 15 November
Contact: gdr_sph@nus.edu.sg



Masters by Research

- Master of Science (Public Health)

Graduate Coursework Programmes

- Master of Public Health
- Graduate Diploma (Public Health)

PhD Programmes

Intakes: August

Required Tests: GRE - for PhD programmes

TOEFL/IELTS - for applicants whose language of undergraduate or graduate instruction is not English

Science

The NUS Faculty of Science offers a range of graduate programmes that are available to students who have completed their Bachelors or Masters.

PhD programmes are primarily research-based, equipping students with the skills to deepen knowledge.

MSc by Research programmes designed to prepare students for professional practice or mastery of a subject area prior to doctoral training.

MSc by Coursework programmes are designed for working professionals who wish to advance their career mobility in their chosen fields of specialisations.



PhD Programmes

Students can look forward to a rewarding and exciting experience at FoS when they join our premier faculty in transformative education and multidisciplinary research. They will get to explore new ideas and make an impact on the scientific frontier. We provide training in specialised areas through independent investigation, study and experimental work, culminating in theses on the research undertaken.

PhD (Biological Sciences)

Apply Before: 15 May / 15 November
Contact: dbsbox6@nus.edu.sg

PhD (Chemistry)

Apply Before: 15 May / 15 November
Contact: chmss@nus.edu.sg

PhD (Food Science and Technology)

Apply Before: 15 May / 15 November
Contact: food@nus.edu.sg

PhD (Mathematics)

Apply Before: 15 May / 15 November
Contact: askmath-res@nus.edu.sg

PhD (Pharmacy)

Apply Before: 15 May / 15 November
Contact: askPharmacy@nus.edu.sg

PhD (Physics)

Apply Before: 15 May / 15 November
Contact: phygrad@nus.edu.sg

PhD (Statistics)

Apply Before: 15 May / 15 November
Contact: stabox10@nus.edu.sg

Masters by Research

- MSc (Chemistry)
- MSc (Food Science and Technology)
- MSc (Pharmacy)
- MSc (Physics)

Graduate Coursework Programmes

Our coursework programmes are designed for both working professionals and university graduates who wish to increase their knowledge and advance their careers in their chosen fields of specialisation. Students may enroll on a full-time or part-time basis depending on their programme of interest. Please visit [here](#) for information.

- MSc (Biodiversity Conservation and Sustainability)
- MSc (Biotechnology)
- MSc (Chemical Sciences)
- MSc (Data Science and Machine Learning)
- MSc (Data Science for Sustainability)
- MSc (Food Science and Human Nutrition)
- MSc (Forensic Science)
- MSc (Mathematics)
- MSc (Pharmaceutical Science & Technology)
- MSc (Physics)
- MSc (Physics for Technology)
- MSc (Quantitative Finance)
- MSc (Statistics)
- Master of Pharmacy (Clinical Pharmacy)
- Doctor of Pharmacy
- Chemical Sciences (NUS-Tianjin University Double MSc Degree Programme)
- Industrial Chemistry (NUS-TUM Joint MSc)
- Physics for Technology (NUS-Tianjin University Double MSc Degree Programme)
- Quantitative Finance (NUS-Shanghai Jiaotong University MSc)

PhD Programmes

Intakes: August / January

Required Tests: GRE - for PhD programmes

TOEFL/IELTS - for applicants whose language of undergraduate instruction is not English

Integrative Sciences & Engineering Programme

The NUS Graduate School's Integrative Sciences and Engineering Programme (ISEP) believes that integrative approaches are required to solve challenging problems in science, engineering, computing, and medicine. We welcome talented PhD students from different background to pursue research that cuts across disciplinary boundaries. ISEP offers premier PhD scholarships to talented students with outstanding academic achievements and strong research potential to conduct research that cuts across disciplinary boundaries. ISEP students have the flexibility to nominate thesis advisors from various faculties/research institutes in the fields of integrative sciences, engineering, computing and bio-medicine.



PhD Programmes

Doctor of Philosophy
(Integrative Sciences and
Engineering Programme)



Apply Before: 15 December (August intake)
Contact: isepenquiry@nus.edu.sg

*Please click  to refer to the respective programme's website for details.

PhD Programmes

Intakes: August / January

Required Tests: GRE - for PhD programmes

TOEFL/IELTS - for applicants whose language of undergraduate instruction is not English

Arts and Social Sciences

The Faculty of Arts and Social Sciences' graduate programmes have grown rapidly in recent years as NUS has made graduate studies one of its cornerstones as a research university. FASS offers a good balance between disciplinary and inter-disciplinary academic training in a research environment where faculty members are engaged in world-class research. FASS' programmes also provide an increasing number of opportunities for selected students to spend time at partner institutions overseas, including King's College London, University of Manchester and Harvard University.

Besides scholarships, FASS provides financial support for its Masters and PhD students to participate in international conferences, and local and overseas fieldwork. Many graduate students are also involved in various research activities.

FASS' aim is for prospective students to be able to pursue their higher studies in a supportive and forward-looking learning environment sustained by leading faculty members, healthy funding support and excellent research facilities and opportunities, which will prepare them for a successful career in academia or other research-oriented work.



PhD Programmes

PhD (Chinese Studies) Apply Before: 16 May / 1 November Contact: fasbox61@nus.edu.sg	PhD (Economics) Apply Before: 1 November Contact: ecsbox1@nus.edu.sg	PhD (Japanese Studies) Apply Before: 16 May / 1 November Contact: fasbox61@nus.edu.sg	PhD (Psychology) Apply Before: 1 November Contact: psybox2@nus.edu.sg
PhD (Communications and New Media) Apply Before: 1 November Contact: cnm.graduate@nus.edu.sg	PhD (English Language & Linguistics) / PhD (English Literature) Apply Before: 1 November Contact: ellbox1@nus.edu.sg	PhD (Malay Studies) Apply Before: 1 November Contact: fasbox58@nus.edu.sg	PhD (Social Work) Apply Before: 1 November Contact: swkbox1@nus.edu.sg
PhD (Comparative Asian Studies) Apply Before: 1 November Contact: fasbox58@nus.edu.sg	PhD (Geography) Apply Before: 16 May / 1 November Contact: geoleep1@nus.edu.sg	PhD (Philosophy) Apply Before: 1 November Contact: philbox1@nus.edu.sg	PhD (Sociology or Anthropology) Apply Before: 1 November Contact: socbox1@nus.edu.sg
PhD (Cultural Studies in Asia) Apply Before: 1 November Contact: cnm.graduate@nus.edu.sg	PhD (History) Apply Before: 1 November Contact: hisbox1@nus.edu.sg	PhD (Political Science) Apply Before: 1 November Contact: polbox1@nus.edu.sg	PhD (South Asian Studies) Apply Before: 1 November Contact: fasbox58@nus.edu.sg

PhD Programmes

Intakes: August for all PhD programmes / January for PhD in Chinese Studies, Japanese Studies and Geography only

Required Tests: GRE - for PhD and Master's by Research programmes

TOEFL/IELTS - for applicants whose native tongue and language of undergraduate instruction are not English

Arts and Social Sciences



PhD Programmes

PhD (Southeast Asian Studies)

Apply Before: 1 November
Contact: fasbox58@nus.edu.sg



PhD (Theatre & Performance Studies)

Apply Before: 1 November
Contact: fasbox58@nus.edu.sg



Joint PhD Programme with King's College London

Apply Before: 1 November
Contact: fasbox3@nus.edu.sg



Masters by Research

Please visit [here](#) > for detailed information.

- Master of Arts (Chinese Studies)
- Master of Arts (Communications and New Media)
- Master of Social Sciences (Economics)
- Master of Arts (English Language & Linguistics)
- Master of Arts (English Literature)
- Master of Social Sciences (Geography)
- Master of Arts (History)
- Master of Arts (Japanese Studies)
- Master of Arts (Malay Studies)
- Master of Arts (Philosophy)
- Master of Social Sciences (Political Science)
- Master of Social Sciences (Psychology)
- Master of Social Sciences (Social Work)
- Master of Social Sciences (Sociology)
- Master of Arts (South Asian Studies)
- Master of Arts (Southeast Asian Studies)
- Master of Arts (Theatre & Performance Studies)

Graduate Coursework Programmes

Please visit [here](#) for detailed information.

- Master of Arts (Applied and Public History)
- Master of Arts (Arts and Cultural Entrepreneurship)
- Master of Arts (Asian and Global History)
- Master of Arts (Chinese Culture and Language)
- Master of Arts (Contemporary Southeast Asia)
- Master of Arts (English Language & Linguistics)
- Master of Arts (History) - NUS-London School of Economics Double Degree
- Master of Arts (Japanese Visual Cultures)
- Master of Arts (Literary Studies)
- Master of Arts (Theatre & Performance Studies)
- Master of Communication
- Master of Economics
- Master of Science (Climate Change & Sustainability)
- Master of Psychology (Clinical)
- Master of Science (Applied Geographic Information Systems)
- Master of Social Work
- Graduate Diploma in Applied and Public History
- Graduate Diploma in Asian and Global History
- Graduate Diploma in Contemporary South-East Asia
- Graduate Diploma in Climate Change and Sustainability
- Graduate Diploma in Social Work

PhD Programmes

Intakes: August / January

Required Tests: GRE - for PhD and Master's by Research programmes

TOEFL/IELTS - for applicants whose native tongue and language of undergraduate instruction are not English

Public Policy

The Lee Kuan Yew School of Public Policy was established in 2004 as a professional school of Public Policy. It offers a unique learning environment by bridging the gap between prevailing theories in the West and best practices emerging in the East. Our curriculum spans across multiple disciplines and is complemented with case studies and a problem-based learning approach. LKYSPP offers a global classroom of diverse experiences of students originating from 80 countries. Our alumni include ambassadors, senators, editors, social entrepreneurs, and private sector leaders, serving in Asia and beyond.

Our collaboration with world-class institutions ensures the continual enhancement of pedagogy and research. LKYSPP is the first in Asia to join the prestigious Global Public Policy Network (GPPN) and is also a member of the Association of Professional Schools of International Affairs (APSIA).

Our faculty and staff are influencing the policy arena through a number of research centres sponsored by the LKYSPP including the Asia Competitiveness Institute, the Centre on Asia and Globalisation, the Institute of Policy Studies, and the Institute for Environment and Sustainability. Through these centres, students have the opportunity to collaborate with globally recognised experts in their field of interest.



PhD Programmes

Doctor of Philosophy (Public Policy)

Apply Before: 10 December
Contact: lkyadmissions@nus.edu.sg



Graduate Coursework Programmes

- Master in International Affairs
- Master in Public Administration
- Master in Public Administration and Management (Chinese)
- Master in Public Policy

Double Degree Programmes

- Master in Public Administration and Master of Business Administration
- Master in Public Administration and Master of Laws
- Master in Public Policy and Master of Business Administration
- Master in Public Policy and Master of Laws

*Please click  to refer to the respective programme's website for details.

PhD Programmes

Intakes: August (for all programmes)

Required Tests: GRE - for PhD programmes

TOEFL/IELTS - for applicants whose language of undergraduate instruction is not English

Business

Founded in 1965, the same year that Singapore gained independence, NUS Business School stands among the world's leading business schools today. The School is distinctive for offering the best of global business knowledge with deep Asian insights, preparing students to lead Asian businesses to international success and to help global businesses succeed in Asia.

The School attracts a diversity of smart and talented students to its broad portfolio of academic programmes, including Bachelor in Business Administration, Master in Business Administration (MBA), Executive MBA, MSc and PhD programmes in addition to the customised and open enrolment Executive Education courses. Admission to NUS Business School is highly competitive, and the School is proud of the exceptional quality of the students.



PhD Programmes

Doctor of Philosophy (Business) in Accounting

Apply Before: 15 December
Contact: phdenquiry@nus.edu.sg



Doctor of Philosophy (Business) in Marketing

Apply Before: 15 December
Contact: phdenquiry@nus.edu.sg



Doctor of Philosophy (Business) in Analytics and Operations

Apply Before: 15 December
Contact: phdenquiry@nus.edu.sg



Doctor of Philosophy (Business) in Real Estate

Apply Before: 15 December
Contact: phdenquiry@nus.edu.sg



Doctor of Philosophy (Business) in Finance

Apply Before: 15 December
Contact: phdenquiry@nus.edu.sg



Doctor of Philosophy (Business) in Strategy & Policy

Apply Before: 15 December
Contact: phdenquiry@nus.edu.sg



Doctor of Philosophy (Business) in Management and Organisation

Apply Before: 15 December
Contact: phdenquiry@nus.edu.sg



Graduate Coursework Programmes

- Master of Business Administration
- The NUS Executive MBA
- The NUS Executive MBA (Chinese)
- UCLA - NUS Executive MBA
- NUS - HEC Paris Master of Business Administration
- NUS - Peking University Master of Business Administration
- NUS-RENMIN MRE-MBA Double Degree Programme
- Master of Business Administration - Master of Public Administration (Double Degree)
- Master of Business Administration - Master of Public Policy (Double Degree)
- Master of Science (Accounting)
- Master of Science (Business Analytics)
- Master of Science (Finance)
- Master of Science (Human Capital Management and Analytics)
- Master of Science (Management)
- Master of Science (Marketing Analytics and Insights)
- Master of Science (Real Estate)
- Master of Science (Strategic Analysis and Innovation)
- Master of Science (Sustainable and Green Finance)

*Please click  to refer to the respective programme's website for details.

PhD Programmes

Intakes: August (for all programmes) / January (for Master's programmes only)

Required Tests: GRE or GMAT (for PhD programmes)

TOEFL/IELTS - for applicants whose language of undergraduate instruction is not English

Law

The Faculty of Law is one of the premier places for legal research in Asia. It has an active research culture with seven research centres, an intense and diverse array of research events and seminars, and large numbers of eminent researchers visiting it from around the world. In 2023, the Law School was ranked 9th and 12th globally by the Times Higher Education and the QS.

Within the Faculty, the NUS Law DPhil programme is a small, highly selective programme of 20 to 25 research students across four years. Each research student must write a significant and original piece of research of 80,000 words and is given four years to do this. The Faculty aims to give all students the most extensive support to help achieve this. Almost all students are given scholarships to cover tuition fees and grant them a monthly stipend. You can also apply for subsidized accommodation. Each student will have one or two supervisors with whom you will discuss your work regularly. You will be given research training across the whole of the first year and will participate in fortnightly doctoral workshops with all other doctoral students across the whole of your time here. There is also a common working and social space, regular social events and research funding for field trips and conferences. NUS Law's aim is for its research students to be challenged and for them to realise their research dreams.



PhD Programmes

Doctor of Philosophy (Law)

Apply Before: 15 November
Contact: lawGradadm@nus.edu.sg



Graduate Coursework Programmes

- Juris Doctor
- Master of Laws
- Master of Laws (Asian Legal Studies)
- Master of Laws (Corporate and Financial Services Law)
- Master of Laws (Intellectual Property and Technology Law)
- Master of Laws (International Arbitration and Dispute Resolution)
- Master of Laws (International Business Law)
- Master of Laws (International and Comparative Law)
- Master of Laws (Maritime Law)
- Graduate Diploma in Maritime Law and Arbitration

*Please click  to refer to the respective programme's website for details.

PhD Programmes

Intakes: August

Required Tests: GRE - for PhD programmes

TOEFL/IELTS - for applicants whose language of undergraduate instruction is not English

School of Continuing and Lifelong Education

The NUS School of Continuing and Lifelong Education (NUS SCALE) was launched in June 2016 to support national manpower needs with high-quality and industry-relevant adult education and training programmes. Drawing on the multidisciplinary expertise of 15 other NUS faculties and schools, backed by cutting-edge research along with strong industry links, NUS SCALE equips youths, professionals, and organisations from the world over with the latest knowledge and skills demanded in the digital economy. Delivered with technology-enabled blended learning approaches, NUS' Continuing Education and Training (CET) programmes are designed to enhance both learning experiences and outcomes.



Graduate Coursework Programmes

- MSc in Industry 4.0
- MSc in Environmental Management
- MSc in Venture Creation



Research Institutes/ Centres of Excellence



Cancer Science
Institute



Institute of Health
Innovation & Technology
(iHealthTech)



Mechanobiology
Institute



Institute of
Data Science



Centre for Quantum
Technologies

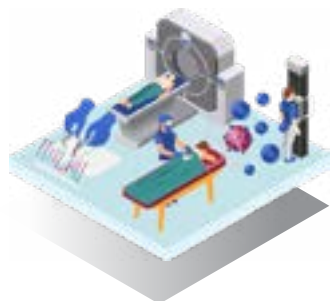


Asian Institute
of Digital Finance



Institute of Operational
Research & Analytics

Research Institutes/ Centres of Excellence



Cancer Science Institute

The Cancer Science Institute of Singapore (CSI Singapore) is a state-of-the-art university research institute affiliated with, and hosted at the National University of Singapore (NUS). Home to world-renowned scientists and awardees of Singapore's prestigious talent development programme - the Singapore Translational Research Investigator Award, CSI Singapore endeavors to revolutionise the landscape of biomedical research and position Singapore as a global leader. CSI's outstanding researchers and exceptional facilities create an energetic environment for groundbreaking science and world-class training.

With the mission to educate and train the next generation of scientists in a translational and multidisciplinary environment, CSI Singapore's PhD programme equips students with the skills, knowledge, and experiences necessary to excel and become leaders in the field of cancer research. Comprehensive training, unique graduate courses and activities, are tailored to develop and train students throughout and beyond their PhD degree.

Doctor of Philosophy (Cancer Biology)

Apply Before: 12 January (August intake)
Contact: csi_gradprog@nus.edu.sg



Institute of Health Innovation & Technology (iHealthTech)

The vision of the Institute for Health Innovation and Technology (iHealthTech) is to advance health and healthcare through technological innovation. The Institute seeks to identify and address clinical challenges in human health and potential through the development of innovative technologies that maintain well-being (i.e. prevention), monitor disease (i.e. early detection and diagnosis) and modulate intervention (i.e. personalized treatment). iHealthTech achieves this through interdisciplinary collaboration among scientists, engineers, clinicians, industrial partners and entrepreneurs to encourage innovation as well as support translational efforts to bring these innovations from the bench to the bedside. A crucial beneficial outcome of this strategy is a trained workforce, entrepreneurs and future leaders well-groomed in health technologies.

Apply via the following faculties; please refer to the respective faculties' section for application details.

- Computing
- Design and Engineering
- Integrative Sciences and Engineering Programme
- Medicine

Doctor of Philosophy

Contact: ask.iht@nus.edu.sg



Mechanobiology Institute

The Mechanobiology Institute (MBI) is a Research Centre of Excellence hosted at NUS devoted to the study of mechanobiology. Mechanobiology is a new paradigm in the life sciences that interrogates biological systems from a physical and mechanical perspective. Some of the broad research questions under investigation at MBI include discovering how cells produce and handle mechanical force to drive form and function, how mechanical inputs integrate with biochemical signals to control biological processes, and how we can understand and modulate aging biomechanical systems for prolonging health or treating disease? To answer these questions, we need to understand living systems from a physical and mechanical perspective. As such, research at MBI is truly multidisciplinary, bringing together scientists with expertise in life sciences, physics, engineering, mathematics, and other related disciplines.

The MBI Graduate Programme trains students in interdisciplinary research and collaborative science. Students have access to the latest research technologies in microscopy and bioimage analysis, micro and nano-fabrication, and high-throughput molecular genomics. [Find out more!](#)

Doctor of Philosophy (Mechanobiology)

Apply Before: 15 January (August intake)
Contact: mbigraduate@nus.edu.sg



🏠 Research Institutes/ Centres of Excellence



Centre for Quantum Technologies

Students keen to begin a career in the fast-growing field of quantum technologies can train at Singapore's Centre for Quantum Technologies (CQT). CQT brings together physicists, computer scientists and engineers to do basic research on quantum physics and to build devices based on quantum phenomena. Experts in this new discipline of quantum technologies are applying their discoveries in computing, communications, and sensing.

CQT was established in December 2007 by Singapore's National Research Foundation and Ministry of Education under the Research Centres of Excellence programme. The Centre hosts over 80 PhD students across experimental and theoretical groups. Students can be supported by a variety of schemes, including CQT scholarships, NUS studentships and project grants.

We consider graduate applications year round. Prospective students are encouraged to contact directly the group(s) they would like to work with. The first step in applying for a PhD at CQT is to get a Principal Investigator's endorsement. Learn more at www.quantumlah.org

Doctor of Philosophy (Quantum Technologies)

Application opens throughout the year
Contact: cqtpd@nus.edu.sg



Institute of Data Science

The Institute of Data Science (IDS) at NUS is the focal point for university-wide data science research, leveraging expertise from multiple Schools and Faculties to tackle problems from multifaceted perspectives. It is a university-wide endeavour aimed at pushing the boundary of data science through transdisciplinary upstream research, and translating it into real-life applications of lasting value. IDS attracts top-quality students in its unique PhD in Data Science programme. The programme is jointly administered with NUS Graduate School under its PhD (Integrative Sciences and Engineering Programme), and the students are supervised by leading staff from NUS who are faculty affiliates of IDS.

Doctor of Philosophy (Data Science)

Apply Before: 15 December (August intake) /
July-August (January intake)
Contact: ids@nus.edu.sg

🏠 Research Institutes/ Centres of Excellence



Asian Institute of Digital Finance

Asian Institute of Digital Finance (AIDF) aims to be a trailblazer in FinTech, serving as a thought leader and knowledge hub. AIDF fosters cutting-edge research, facilitating collaborations with industry partners and leading academic institutions globally. Through its esteemed faculty and industry experts, AIDF advances knowledge in key FinTech areas, including mobile payments, cryptocurrency, credit analytics, robo-advisory, and financial data analytics.

With the growing importance of FinTech, AIDF launched the NUS PhD (Digital Financial Technology) programme, blending advanced research in finance with digital technology developments. It fosters collaboration between academia and industry, exposing students to real-world challenges. Interaction with faculty and experts within AIDF expands their insights and expertise across disciplines. As a student, you gain access to cutting-edge resources, state-of-the-art facilities, and a vibrant intellectual community. The programme offers a supportive environment for ground-breaking research, industry collaboration, and a deep understanding of FinTech's theoretical foundations and practical applications.

The PhD programme provides a solid foundation for a successful career in the rapidly expanding FinTech field. Whether your aspirations lie in academic research or industry leadership, join us in shaping the future of digital financial technology.

Doctor of Philosophy (Digital Financial Technology)

Apply Before: 15 December (August intake)
Contact: aidf-grd@nus.edu.sg



Institute of Operational Research & Analytics

The Institute of Operations Research and Analytics (IORA) was established in 2016 as a centre of excellence to integrate Operations Research with Data Analytics. The institute aims to develop world-class research programmes to modernize the practice of Operations Research in this new data-intensive environment; and to nurture a new generation of PhD students, well versed in the tools and theories in the integration of Data Analytics into Operations Research.

The PhD Programme in Operations Research and Analytics provides students with a rigorous training in the fields of Operations Research (OR) and Analytics, empowering them to contribute to advanced research and make a positive impact on society. Students will receive in-depth training in core OR modelling and methodology, as well as statistical analysis and mathematical optimization.

Doctor of Philosophy (Operations Research and Analytics)

Apply Before: 15 January (August intake) /
31 August (January intake)
Contact: iora@nus.edu.sg



Overview of Scholarships

NUS offers direct-[PhD scholarships](#) to outstanding students of any nationalities with excellent academic performance and strong research potential. Find out [more](#).

- NUS Research Scholarship (Faculty Hosted)
- Field-specific Scholarships for Business & Finance, Computing & Data Science, Medicine, Sciences & Engineering, Social Sciences & Humanities
- Integrative Sciences & Engineering Programme
- (by nomination only) President's Graduate Fellowship

Student Life

Read up on

- [International students' experience](#)
- [Current graduate students' insights](#)
- [Accommodation](#)

Financial Aid

For Master's programmes:

find out more about [tuition and other fees](#) and [financial aid schemes](#) available.

Need any help?

Email us @ NUSGSEnquiry@nus.edu.sg

**Join us and start your graduate
education journey in NUS!**



NUS
Graduate School



University Hall, Tan Chin Tuan Wing
Level 05, #05-03, 21 Lower Kent Ridge Road
Singapore 119077

nusgsenquiry@nus.edu.sg

